

denver life[®]

Colorado's leading lifestyle magazine

2020 DESIGNER SHOWHOUSE

Denver's top talents beautify a modern organic build in Wash Park.



NOVEMBER 2020

PLEASE DISPLAY UNTIL 12.05.2020 **\$4.95**



denverlifemagazine.com

HOME VISIONARY Exposing the art of architecture

WELLNESS FROM WITHIN How Hydrate IV Bar is making you healthier

ROOM WITH A VIEW Creating optimal office space for your kids



CONTEMPORARY MEETS UNCONVENTIONAL

The *2020 Denver Life Magazine Designer Showhouse*, presented by U.S. Bank Wealth Management, marries modern and traditional to create an elegant but family functional, custom-built home in one of Denver's most popular neighborhoods.

BY KERRIE LEE BROWN

PHOTOGRAPHY BY EMILY MINTON REDFIELD



In my opinion, the most striking feature is how the exterior red brick complements the impressive floor-to-ceiling windows facing the street. It's like getting a bird's eye view of what's going on inside without the luxury of experiencing the exciting interior. When you first walk up to the stunning home that's nestled in the sought-after neighborhood, Washington Park—you can't help but notice the property's mix of modern sophistication with casual organic elements that's perfect for any active family. This is what initially drew me in. However, it was only the beginning of a much more meaningful experience. Here's an overview...

The Project

The *Denver Life Magazine Designer Showhouse* project began in 2013, and has proudly raised nearly \$200,000 for its charitable partners. Once again, this year we collaborated with Denver's own Caliber Construction to showcase a beautiful "market-ready" home; alongside the unbelievable talents of fourteen local interior design teams who volunteered their time to design fabulous, functional spaces for any active, Colorado family. The ultimate goal for this annual endeavor is to raise funds and spread awareness for Habitat for Humanity of Metro Denver as we join them in their mission to build homes, communities, and hope.



The Cause

Habitat for Humanity of Metro Denver is an organization that brings the community together to provide affordable housing for families in underserved areas. This year in particular, the pandemic has made the need for housing even more urgent. "It's hard to shelter at home when you don't have a good home," says Heather Lafferty, CEO and executive director. "Especially when a house is too expensive or not safe, it becomes such a challenge. For instance, we ask many of our essential workers to put their lives on the line for us which is so important—and yet they may not have a safe place for their kids. That's where we step in."

Research shows that housing stability positively impacts job retention, increases health and wellness, and fosters educational

success among children. In other words, housing stability transforms lives for generations and lifts communities overall. “With 95 percent of the kids who grow up in a Habitat home now graduating from high school—the stress on parents is far less and kids are able to establish themselves in their community after getting a quality education.”

Habitat also empowers hardworking families that provide vital services to the community, such as first responders, nurses, and teachers, and build strength, stability, and self-reliance through affordable home ownership. “The ability for people to invest their talents, and in some cases their inexperience, to ensure a family has a solid foundation from which they are able to succeed in life requires incredible, collaborative efforts,” Lafferty says. “We serve more than 200 households a year through a combination of our homeownership program, home repair program, and partnership with healthcare organizations to help those in need.”

Lafferty’s drive and passion comes from not only the organization’s mission, but she gets to work with the best of humanity every day. “I am surrounded by volunteers and staff members who are working extremely hard to make an impact on behalf of their families to build a safe and stable home. I can’t stress enough that having a good home is vital for children and families these days—and I’m so happy to be a part of those inspiring stories.”

The Home

The finished Showhouse is located at 1266 South Williams Street with a price tag of \$2.8 million. Designed by the revered Alvarez Morris Architectural Studio and built by Caliber Construction, this “Organic Modern” impeccably crafted home is 5,422 square feet with 5 bedrooms/5 baths.

The main floor includes a dedicated office space, floor-to-ceiling windows, a designer kitchen with ebony and matte grey cabinetry, and quartz and soapstone countertops. The main living area opens up onto the back patio space creating an amazing indoor/outdoor entertaining space—with 10’ vaulted ceilings, a spacious laundry room, a Master Suite retreat and marble bathroom. Other notable features include: Anderson windows throughout, European White Oak Arrigoni hardwood floors, a front patio, detached 2-car garage, and a dedicated exercise room/entertaining area in the basement.

Interestingly, the home was built in 258 days, but the builders lost five weeks due to the pandemic. With sub-contractors unable to provide installations per schedule and the uncertainty of closures on site, this year’s home means even more to those involved. “There’s really a sense of accomplishment with this home, especially with COVID-19,” says Brad Liber, owner of Caliber Construction, LLC. “In the Spring we had real conversations about what we’d do if this couldn’t happen. How would we tell the designers? There were a lot of internal discussions that the remainder of the project would just have a different atmosphere. But, we pushed through knowing and believing in the importance of the project and how it would impact the community.”

The community is just as spectacular as the house. Wash Park has two lakes on 165 acres, and any day is filled with runners, cyclists, and activities fitting the season. The neighborhood architecture is a blend

of historic and contemporary, but best known for Prairie School, Bungalow/Craftsman, and Italianate styles. Historic outbuildings, tennis courts, flower gardens, and a recreation center add to its popularity.

The Mission

You only have to walk into the impressive property to realize that Caliber has a level of passion for design and quality that translates into homes that dreams are made of. “The goal was to hold onto something special and cease the moment despite the restrictions and uncertainty we came up against,” says Liber. “The pandemic certainly made for some interesting decision-making early on in the process—with some obvious delays. However, we managed to build this beautiful home with the mission still top of mind.”

Caylin Engle, lead designer for Caliber, agrees that this home is indeed special. “Looking back at the beginning six months ago there were new rules to abide by. In April, we had no idea what was going on, but we made it work. We have an incredible team of sub-contractors who needed us to power through—so we pushed away all the noise and got it done. And, we couldn’t be more excited.”

The team’s effort definitely shows. “We spent money in the areas that matter,” adds Engle. “The 10-foot, vaulted ceilings on the main floor are large and wide open. And yet we managed to create several intimate spaces in the more open areas, like the kitchen nook. You’re not yelling at each other in a space where families gather all the time.

There are also a lot of mixed metals with soft touches throughout, so it’s a good blend of contemporary and traditional.”

In the end, Engle made sure the vision was cohesive; while keeping the integrity of the bones of the house. “We narrowed all of our selections down so when the designers were choosing tile for example, there wasn’t a feeling of disjointedness with the hard finishes. They were still able to put their own expression [into their space] with the accessories, artwork, etc.”

SHOWHOUSE INFO

- We invite you to a public tour of the home for a \$20 donation with 100 percent of the proceeds going to Habitat for Humanity of Metro Denver.

When: November 5-8 and 12-15 from 10 a.m. to 4 p.m.

- Or, if you prefer to socially distance, feel free to visit our 2020 Designer Showhouse website to make an online donation and to watch an exclusive virtual tour of the custom home.

denverlifemagazine.com/designer-showhouse-2020/

Now it’s your turn...

Over the next several pages, we’ve highlighted every room and space for your viewing pleasure—from the elegant interiors and exteriors to all of the beautiful touches in between. We hope you are inspired by the incredible design knowing that 100 percent of the proceeds will have a direct impact on underserved families in Denver communities. Thanks in advance for your contribution.


PRESENTED BY
U.S. Bank Wealth Management
usbank.com

SPONSOR
MidFirst Bank
midfirst.com

BENEFITTING
Habitat for Humanity
of Metro Denver
habitatmetrodenver.org

BUILDER
Caliber Construction, LLC
caliber.co

LISTING BROKER
MileHiModern
milehimodern.com



Dash of elegance

The tiled fireplace in the Living Room is the focal point, providing a grounded sense of movement, activity, and kinetic energy.







LIVING ROOM

Designer

GREG COMSTOCK
COMSTOCK DESIGN
303.761.2440
comstockdesign.com

Vision for the space

"Our vision for the living room was driven by the overall aesthetic of organic modernism, with an eye toward refinement and a dash of elegance. The tiled fireplace is the focal point of the room, providing a grounded sense of movement, activity, and kinetic energy. Lighting is achieved through a unique, geometric grid of semi-flush fixtures that define the space, provide ample light, and create non-intrusive interest. Furnishings with biophilic-inspired shapes lend a smart, structured, modern, livable, and welcoming environment for relaxing, playing, and working, while lending itself as a gateway to the outdoors (backyard)."

What makes it unique

"Energy created by the clean design of the fireplace provides a central hub from which the activities of an active Denver family can radiate. With ample open space to lounge, watch television, game, and spend time together, this room also becomes a natural seating and activity extension of the kitchen."

Thoughts on giving back

"It is an honor to be partnered with *Denver Life Magazine* to give back to the local community through our work to bring forth a design that is elegant, unique, active, and relevant to these changing times we live in. Creating a home, not a house, is our goal. Thank you to all of our sponsors and vendors."





DINING ROOM

Designer

NIKKI HOLT, BECCA CLARK,
CARTER BRASCH

KIMBERLY TIMMONS

INTERIORS

303.904.8244

ktinteriors.net

Vision for the space

"A true amalgam, this space gives a playful nod to casual organic style while still embracing the modern feel of the home. Our goal was to fully merge the two, pairing a live-edge table with a two-toned glam light fixture, fur throws with sleek leather chairs, and a colorful Persian rug with strikingly modern built-in cabinetry. That said, we also hoped to contribute to the overall functionality and feel of the main level common spaces by creating a sense of dual privacy and openness. The slatted wood built-in wall became the perfect solution, encouraging visibility and connectivity to the other primary spaces without compromising privacy. The end result: a seamless blend of colors, layers, and shapes that is somehow both curated and unexpected, secluded and social."

See their **POWDER ROOM** on page 84.

Custom Cabinetry

Encompassing all phases of the project and execution to ensure an incredibly flawless kitchen, the 2020 Designer Showhouse's cabinets and kitchen floor plan were designed by Angela Otten of Inspire Kitchen Design Studio. 720.650.0500, inspirekds.com





KITCHEN

Designer

TENNILLE WOOD

**BEAUTIFUL HABITAT:
INTERIOR DESIGN &
DECORATION**

303.323.4683

beautifulhabitat.com

Vision for the space

"The overall vision for the kitchen is a modern, slightly edgy space that is still warm and inviting. As a designer, I like to push people out of their comfort zones. We've done that a few ways with this kitchen: incorporating black cabinets, mixing cabinet and countertop materials, and mixing metals. We've all seen and done the white kitchen for the last 10 years. I wanted to demonstrate that a black kitchen is functional and dramatic and not the dark cave everyone fears. To soften the black, we've incorporated organic elements like natural woods, handmade tile, brass and the flowing, organic patterns of the fabrics."

What makes it unique

"This kitchen has zones for the whole family to be together, but engaging in different activities. The extended island offers ample prep space on the kitchen side and adequate seating on the living room side. Eliminating wall cabinets and combining storage into tall cabinets means everything is accessible to family members without tripping over each other in the food prep zone."

See their **KITCHEN NOOK** design on next page...



KITCHEN NOOK

Vision for the space

"My vision was a comfortable and casual space for the family to come together. The banquette offers flexibility in seating a whole group, or one person lounging with your feet up and a cup of coffee. The wood slat dividers are a nod to mid-century modern, but appropriate for 21st century living."

What makes it unique

"The nook banquette is perfect for everything from a family meal, to lounging with a book, to homework, crafts, or game night. Function is always top of mind with my designs. The back cushion is necessary for a comfortable banquette. By suspending the cushion on leather straps, there is no crevasse where the cushions meet for crumbs to collect. I've selected durable family-proof fabrics that are resistant and washable, while still providing loads of pattern, texture and style. You really can have it all!"

Thoughts on giving back

"COVID-19 has proven what I've long believed—the home is so important. Our homes are safety, security, and sanctuary. In 2020 our homes became offices, schools, home gyms, and more. To be able to raise money to help provide Denver families with a home and sanctuary is a true privilege. The families that are helped by Habitat for Humanity are those who have been our heroes in 2020: nurses, first responders, and teachers. I am honored to help these Denver families achieve their dreams of home ownership."

≡ **On the Go**

The office was thoughtfully designed to reflect the exciting life of a vibrant and empowered woman.



OFFICE

Designer

MARGARITA BRAVO
720.735.7533
margaritabravo.com

Vision for the space

"We were immediately inspired by the wallpaper from Schumacher that we are using as an accent in this space. We wanted the office to feel bright and lighthearted, but also fit in with the natural scheme of the entire home. From there, we were able to create a cohesive and unique space with the use of custom designed furniture and built-ins."

What makes it unique

"Our favorite thing is the custom designed pocket door. We wanted to have something that made a statement and was as much of an art piece as it was functional to create optional privacy for the space. Our Design Engineer created this piece specifically for the room, so it was made to be exactly how we imagined. In addition, we chose this color palette to not only fit with natural palette of the entire home, but also have a pop of an unexpected color to bring interest and excitement into the space. By mixing different textures we brought interest and layers into an otherwise neutral palette."

Thoughts on giving back

"These are difficult and unprecedented times. We all have been affected by this virus. Anxiety, depression, businesses closing, economic deterioration, lots and lots of pain and suffering still to come as we are still learning to navigate the new normal. I have found that the best way to deal with these levels of uncertainty is to be grateful for what we have and to give back whenever we can.



Being part of this year's Designer Showhouse has a special meaning to me and to my team. It is our way to tell the Denver community that we are here and that we care. We always have and we always will. Habitat for Humanity of Metro Denver is that special partner that we can join efforts with so we can continue to support those in need, especially in times like this. We are thankful to be part of this."

Custom Creations

The office includes several custom-built items from the exclusive furniture collection, Sorella, designed by Margarita Bravo and her sister, Maria.

margaritabravo.com/shop/sorella-furniture



Built-In Library

Busy and chaotic, yet organized in one place, the furniture and fixings were chosen for the space and tone of colors—calm and peaceful.



POWDER ROOM

Designer

NIKKI HOLT, BECCA CLARK,
CARTER BRASCH
KIMBERLY TIMMONS
INTERIORS
303.904.8244
ktinteriors.net

Vision for the space

“Our intent was to maximize the impact of a small space without competing with the overall vision of the home. Central to our concept is the black, hexagonal tile wainscot, which carries up all walls of the room and creates a narrow wood ledge for our leaner mirror and focal art wall. This original idea became the driving force behind our design in its entirety, and our ledge became a platform to layer colorful artistic elements and plants, adding a soft and playful flair to our otherwise high-contrast design.”

What makes it unique

“Both utilitarian and stylized, our small space allows for full functionality while still catering to the typical Denver household. With its dark, tiled vanity wall and quartz countertops, the room is the embodiment of low-maintenance—perfect for a family on the go. Pairing warm, wood elements with our simple, dark iron leaner mirror, the room gives a subtle nod to Colorado style, which so often brings the elegance and simplicity of the outdoors into the home.”

Thoughts on giving back

“KTI has loved participating in the designer showhouse for the past four years. It is not often in our industry that we can combine high-end design with community outreach and service. However, when the two are combined a beautiful project emerges.”

LAUNDRY ROOM

Designer

COURTNEY WELLS

LUSI DESIGN

415.336.6228

lusidesigndenver.com

Vision for the space

"My vision for this room is a marriage of function and style. Many of us dread doing laundry, so creating an oasis that is enjoyable to work in is important. Amazing tile, natural light, soft accent lighting, and plenty of storage make this room pretty and pleasing to the eye. Designing this space is not only important for what you see and touch and feel within the room, but also from the viewpoint from the main stairwell. My goal is to create a room that you don't want to shut the door to, but instead are proud to leave open and share with the home's adjoining spaces."

What makes it unique

"Just as in real estate, the laundry room is all about location, location, location. On the second floor, this room is easily accessible for an active Colorado family. A sink is key in any laundry room, and the high-end washer and dryer units within the design layout make the space highly functional. With the open shelving, the room feels less utilitarian and more welcoming. When you walk in this room, you don't feel like you are in a sea of laundry."

Thoughts on giving back

"This is my second year being part of this creative community of designers and it's truly an honor and a privilege. Giving back to Habitat for Humanity of Metro Denver brings me so much joy and channeling that energy into the space to share with others is such a pleasure. Seeing the rooms transform and come to life is so refreshing and inspiring. I hope everyone has the opportunity to tour this spectacular home and donate to such a wonderful organization."





MASTER BEDROOM

Designer

STEPHEN F. LAPPEN AND
HUNTER KEEFER MARGOLF
SPATIAL RELATIONS
303.579.4433
spatialrelations.com

Vision for the space

"Inspiration is never literal. For us, inspiration is a force that draws upon all aspects of life and nature. In creating the interior design for the Designer Showhouse master bedroom and bathroom spaces, first and foremost we wanted the interiors to be transformative and experiential—to engage the viewer and their senses. All six, unless

you include whimsy, and then there are seven! We'd like to thank Area Environments, Brass Bed of Denver/Boulder, Charles Eisen, Carter, Circa, FiberSeal, Free-Range Movers, MOD, Summit Drapery, and TOWN."

What makes it unique

"The idea of shelter became a more charged, spellbinding word during the pandemic.



Inspired Healing

The juxtaposition of clean lines with the disruption and contrast of the natural elements means layered materials, texture, and technology drive the design and balance of the rooms.

Specifically, regarding the 2020 Designer Showhouse we thought, 'let's stay away from the big book of organic modern.' Let's think of the subtle play of light and how nature seduces us, what we are drawn to in nature, how the leaves flicker in the wind, or the variation of silver to the blue of a sunset. Achieving the 'organic modern' design for us meant, as we progressed in the design

process—softening the minimalist modern aesthetic of the architecture with pieces that had a meaning and a story. For example, we selected the teak carved temple pendant in the master bath after reviewing the space. The idea is meant to evoke a sense history, a hand, a personal touch of a well-traveled individual. To evoke a story and give context. Architecturally, the size of the

mandala has the added benefit of repetition; carrying the Contemporary Round LED mirrors around the room."

≡ **See their *ENSUITE* design on next page...**





ENSUITE

Thoughts on giving back

"It is always a welcome experience to collaborate on an event that both broadens our scope of community, and benefits a worthy organization such as Habitat for Humanity. As designers we tend to get focused on the next, and the next, and about what? So when we were asked to step away from our own ambitions, and turn our design studio and energies toward more benevolent and thoughtful experiences—it challenged us to really bring our best work and heart we have to make this the most worthwhile endeavor for all involved and for those it will benefit. We love and are so appreciative of all the hard work every individual has brought to this event. Special thanks to our philanthropic partners at *Denver Life Magazine*, Caliber Construction, and Habitat for Humanity."



TEEN BOY'S BEDROOM

Designer

ERIKA M. RUNDIKS
**RECHERCHE INTERIOR
DESIGN**
720.839.0321
rechercheid.com

Vision for the space

"For a teenage boy room, it had to be inspired by music, rock and roll, and reggae. Bold colors come to mind for that, colors that more mature folks shy away from (even myself). Black is a bit essential as well in that youth want to show and

feel their dark side. For the natural elements, textural rugs and straight forward materials of wood, leather and metal that are more on the indestructible side are used. The wallpaper was a big inspiration in that it is graphic, with bold colors, very textural and wild. This room is a move out from the little boy's room of blue and on to a more serious look that is very expressive."

What makes it unique

"This room is practical yet

comfortable, inviting a teenager to hang out and enjoy. The materials are strong yet have an innate natural essence. The wallpaper really brings the outdoors inside but in a more dramatic, dream-like way; it is exaggerated yet still makes you feel like you are outside."

Thoughts on giving back

"Now more than ever our homes are our sanctuary. Owning a home is such a privilege, especially in Denver. I have seen our community in the

teachers, health care workers, food, and grocery employees, to name a few, working in essential jobs that support everyone. Is their living wage enough to support their families and have a home? Habitat for Humanity is a cause I believe in for Denver and the world. As an interior designer I know my job is not essential except to my own family and I am so proud to be a part of something bigger and better that is making a difference."

Bold Move

The wild wallpaper in the room brings the outdoors inside but in a more dramatic, dream-like way.





GIRL'S BEDROOM & BATH

Designers

ROB OSGARD, SUE O'GARA,
AND BETH O'NEILL

HOWARD LORTON FURNITURE & DESIGN

303.529.8843

howardlorton.com

Vision for the space

"Since this is a new city for this family, we want to make their junior-high school aged daughter's bedroom warm, inviting and energetic. We have chosen a day bed that can also be used as a lounging sofa when she has friends over to hang out. We chose expressive accessories that lend themselves to a young, vibrant personality. The colors are bright and youthful. The ceiling light

fixture adds a fun, current and flirtatious feeling to the space. The ensuite bathroom also has lots of great organic texture, adding depth and interest."

What makes it unique

"This bedroom has lots of space, is well organized, and is not full of clutter—so it's easy to maintain, especially when you're on the go."

Thoughts on giving back

"It's heart-warming to design for the 2020 Designer Showhouse and to have the opportunity to give back to our special Denver community. We have had a lot of fun collaborating and selecting all the furnishings and finishes."







BOY'S BEDROOM & BATH

Designer

CANDACE DONNELL
DESIGN STUDIO INTERIOR SOLUTIONS
303.652.1727
dsinteriorsolutions.com

Vision for the space

"Design Studio Interior Solutions' room is a space for an active young man, a place for homework, afternoon hangouts with friends, and nights spent dreaming about snowboarding adventures in his new home state of Colorado. From the textured wallcover-

ings, to the high-tech lighting and the comfortable furniture, this room is modern, organic, warm and fun. Design Studio Interior Solutions commissioned an original painting of snowboarding boys on a mountain. The energetic, abstract feel of the painting brings an athletic and whimsical spirit to the space while the color palette connects to the scheme of the rest of the room. The custom pillow shams, by Walker Valentine, are hand stitched with playful phrases for snowboarders."

What makes it unique

"This room is right for a contemporary Denver family as it offers a place for everything—homework, sleepovers, storage, lounging—all in an enjoyable, stylish setting that fits in the builder's vision of a modern, organic house."

Thoughts on giving back

"2020 has shown us the importance of community, of looking out for one another, and the safety and security of home. Design Studio is proud to participate in the 2020 Designer Showhouse for these

very reasons. Working with our peers, Denver's great design fraternity, and with Habitat for Humanity is a perfect way to contribute to our hometown and to help create a beautiful new home for a family in our beloved Colorado."





RECREATION ROOM & BAR

Designers

NANCY VANCLEVE, GIA WASIK, AND CATHY OLSON
THE SHOWROOM @ FURNITURE ROW
303.296.9514
furniturerow.com/fr/theshowroom

Vision for the space

"We knew this would be a much used room, so it had to be built to last but also keep the aesthetic of the more formal rooms. The custom Bernhardt sectional was the ticket for seating, stunning looks and classic construc-

tion that will stand up to years of wear. We curated pull-up seating throughout the space to allow the room to transition to wherever the action is. Window coverings have the option of filtering the light, or completely darkening the room for movies or game time anytime."

What makes it unique

"At its core, the room had to have beautiful furnishings that could withstand an active family. We wanted the multi-use space to be comfortable for any activity, and a place to be proud

to share with family and friends. Keeping the upholstery neutral meant we could have fun with the pillows, accents, rugs and finishes, while maintaining the contemporary, organic feel of the space."

Thoughts on giving back

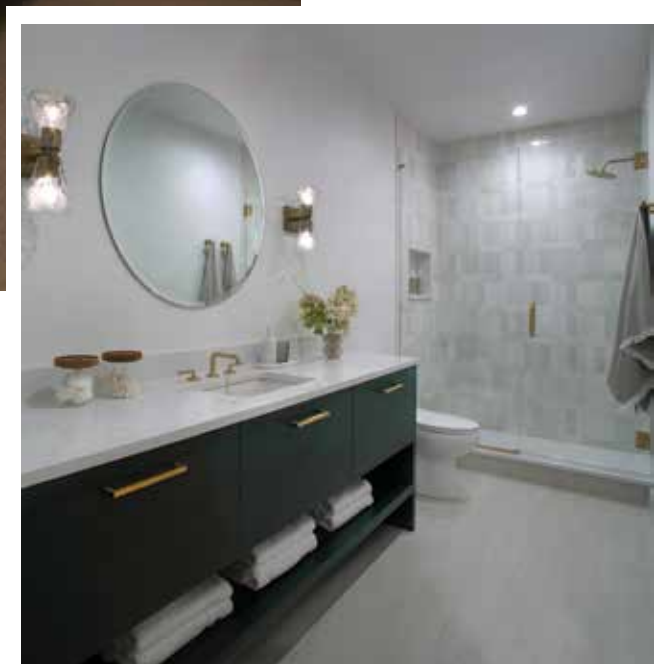
"We are absolutely thrilled to be part of *Denver Life Magazine's* Designer Showhouse. What an honor to be part of this talented team of designers. What could be better than doing what we love and benefiting to such a great cause: Win-Win!"



“

We are so excited to continue our partnership with *Denver Life Magazine* on the 2020 Designer Showhouse. The money is being raised in such a unique way—and the house inspires visitors with such creative ideas on how to create a home that is warm and inviting. This year’s house is beautiful and very impactful.”

—Heather Lafferty, CEO and Executive Director, Habitat for Humanity of Metro Denver



GUEST BEDROOM & BATH

Designers

MOLLY BEVAN AND KIM
BLANKENBURG
**LAYERS + LINES HOME
DESIGN**
303.408.5209
layerslineshome.com

Vision for the space

“Our goal was to design an elegant and welcoming living space where guests will feel at home and also know they are someplace special. Grounded in practicality, the bedroom has a global feel layered with simple patterns and textures that create a softness against the bolder black elements.

Green is the prominent accent color, bringing in the outdoors, with a forest-themed fabric on custom stools inspired by the

Colorado wilderness. There are no superfluous pieces in the bedroom, only what is needed for the comfort and convenience of guests. This creates plenty of room to move and allows the bed to be a visual centerpiece, making a beautiful statement in the space and inviting guests to sink in. The bathroom is a simple and understated companion to the bedroom with touches of brass, deep green cabinets and variations in the shower tile that echo the colors and lush textures of the bedroom.”

What makes it unique

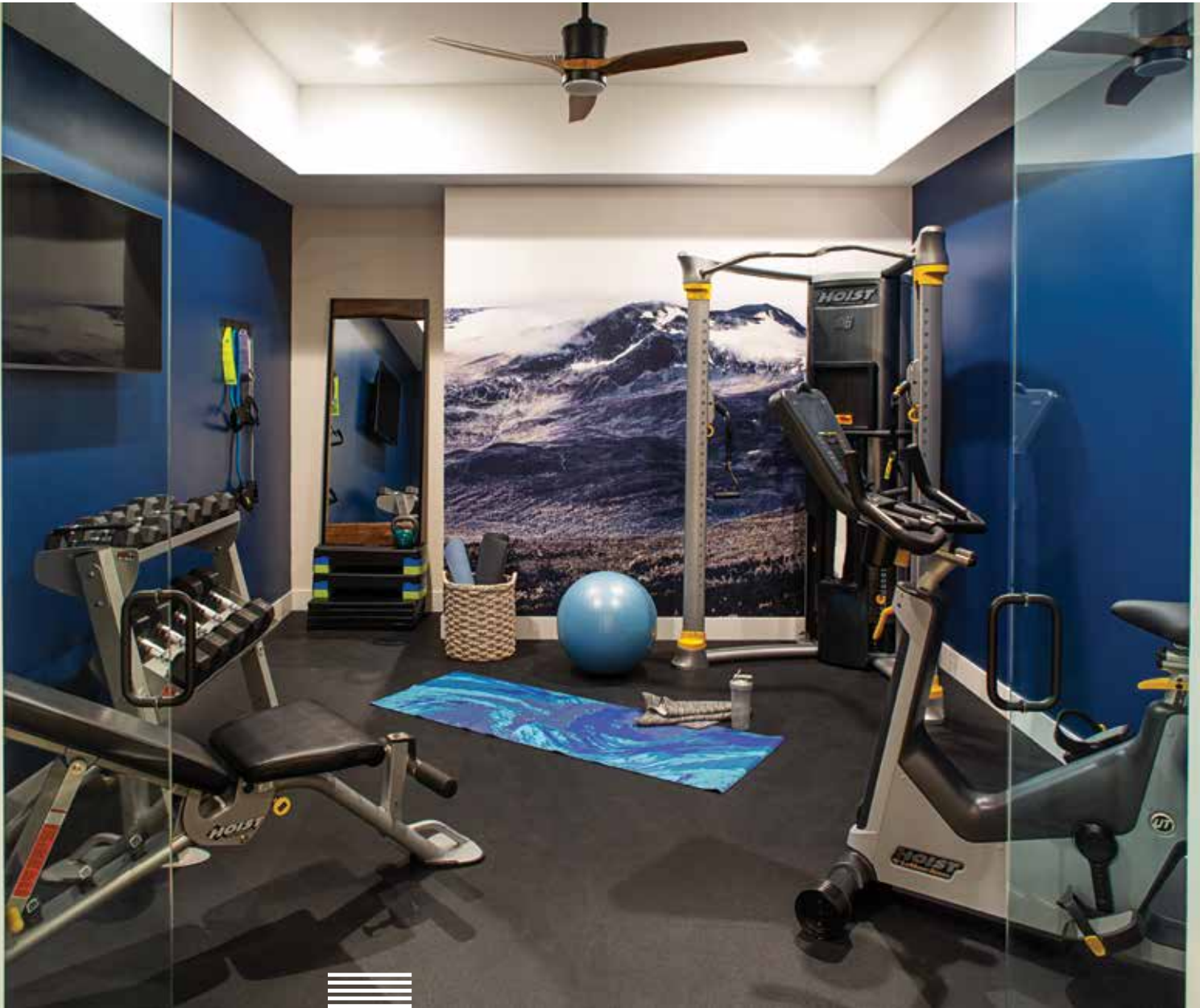
“The guest bedroom and bathroom are luxurious in keeping with the overall design of the home, but nothing is so precious that guests would feel they have to tiptoe around the space. Our goal is always to de-

sign rooms that work with the way our clients live their real lives and we carried that philosophy into this project. Don't let the pretty fool you—these rooms are meant to be lived in. We envision the homeowners and their guests coming home from a day of hiking in the mountains, kicking off their boots and completely relaxing in this beautiful space.”

Thoughts on giving back

“This is a dream opportunity!

Helping raise funds for Habitat for Humanity of Metro Denver while working with such talented designers in a stunning home—what more could we ask for? Habitat for Humanity's mission speaks to us as designers as we believe everyone deserves the stability having a home provides. We admire the work of Habitat for Humanity and are proud to participate so the organization can continue to empower families throughout Metro Denver.”



IN-HOME GYM

Designers

CASSY KICKLIGHTER POOLE
KALEIDOSCOPE DESIGN
303.521.7297
kaleidoscopedesigndenver.com

Vision for the space

"We added the mountain mural scene in the gym to bring the outdoors in."

What makes it unique

"The glass doors were a nice touch to make the gym feel a part of the overall living space. Don't be afraid to add a bold paint color especially when it is more of a specialized room."

Thoughts on giving back

"We are grateful to be a part of any organization that gives back

to the community. We work as designers to help improve the spaces and lives of our clients through form and functionality; and it is all the more special when it aligns with a charity that holds the same values!"



MUDROOM

Designers

DAWN WILKINSON
SIX WALLS INTERIOR DESIGN
206.275.3399 | six-walls.com

Vision for the space

"My vision was to create a fun and inviting space that is a snap to keep tidy, while offering a multitude of concealed storage options for an active family with lots of gear for enjoying the outdoors. By anchoring the room with a graphic hexagonal tile floor pattern that symbolizes connectivity with the outdoors, we work our way up to the durable and textured cabinetry finish, topped off with a sculpturally interesting light fixture that helps to light the way, and create a warm centrally located welcome. The circular hooks on the wall symbolize inclusion and provide a playful and functional, easy access place for objects of all shapes and sizes."

What makes it unique

"A highly functional mudroom is a must-have for a busy family. Located next to the kitchen, this zone could be one of, if not the most active spaces in the home. The gateway to loading up and heading out, and also coming in with a load full of groceries, easy transition from indoors and out requires highly functional storage solutions with accessibility for people of all ages and abilities. This space will surely prove to be one of the most active areas of the home on a daily basis."

Thoughts on giving back

"For over 15 years, Six Walls Interior Design has given back to the local communities we serve. Our long-standing relationship with The Make-A-Wish Foundation in the Seattle area for example, where we have granted over a dozen room makeover wishes, allows us to see the direct impact that great design has on the human spirit. Being a designer for [this project] has offered us yet another way to positively influence the Denver community by benefiting Habitat for Humanity and it's vision for a world where everyone has a decent place to live by building homes, community, and hope."





PATIO

Designers

SHAWN ROKOSZ AND
LINDSAY KENISON
CHRISTY SPORTS
877.754.7627
christysports.com

Time to Chill

The goal was to create an easy and effortless outdoor space so the homeowners can spend quality time together after a day of exploring Denver or hiking in the mountains.

Vision for the space

“This year we wanted to focus on visual cues from inside the home, so we honed in on the geometrics of the tiles that were being used throughout the house and repeated them in our fabrics. We chose furniture with an interesting silhouette to complement the architectural space inside. The seating is modular and light for quick arranging and re-arranging. Also, this year is the first year where the fire element is not built into the space, which can allow the space to grow or change in whatever way it best suits the homeowner.”

What makes it unique

“The Denver family is always outside, whether it’s in the mountains or their own backyard. Everything we chose for the outdoor space helps extend that time outdoors from the lights to the firepit. In addition, all the seating is cushionless so there is no need to be worried about a rainstorm, or snowstorm for that matter, the furniture is ready when the first bit of sun pokes through the clouds. It’s perfect for an active family because people who live in Colorado love the outdoors.”

Thoughts on giving back

“Being a part of something that gives back is always great, but even more we get to work alongside people who care deeply about the design community and Denver. For us, we have fun with design beyond what we do every day in our stores. There is a high level of pride knowing your creative energy is going towards something greater than yourself and extends into the community. We love collaborating with so many talented designers for a great cause.”

Showhouse Resources 2020

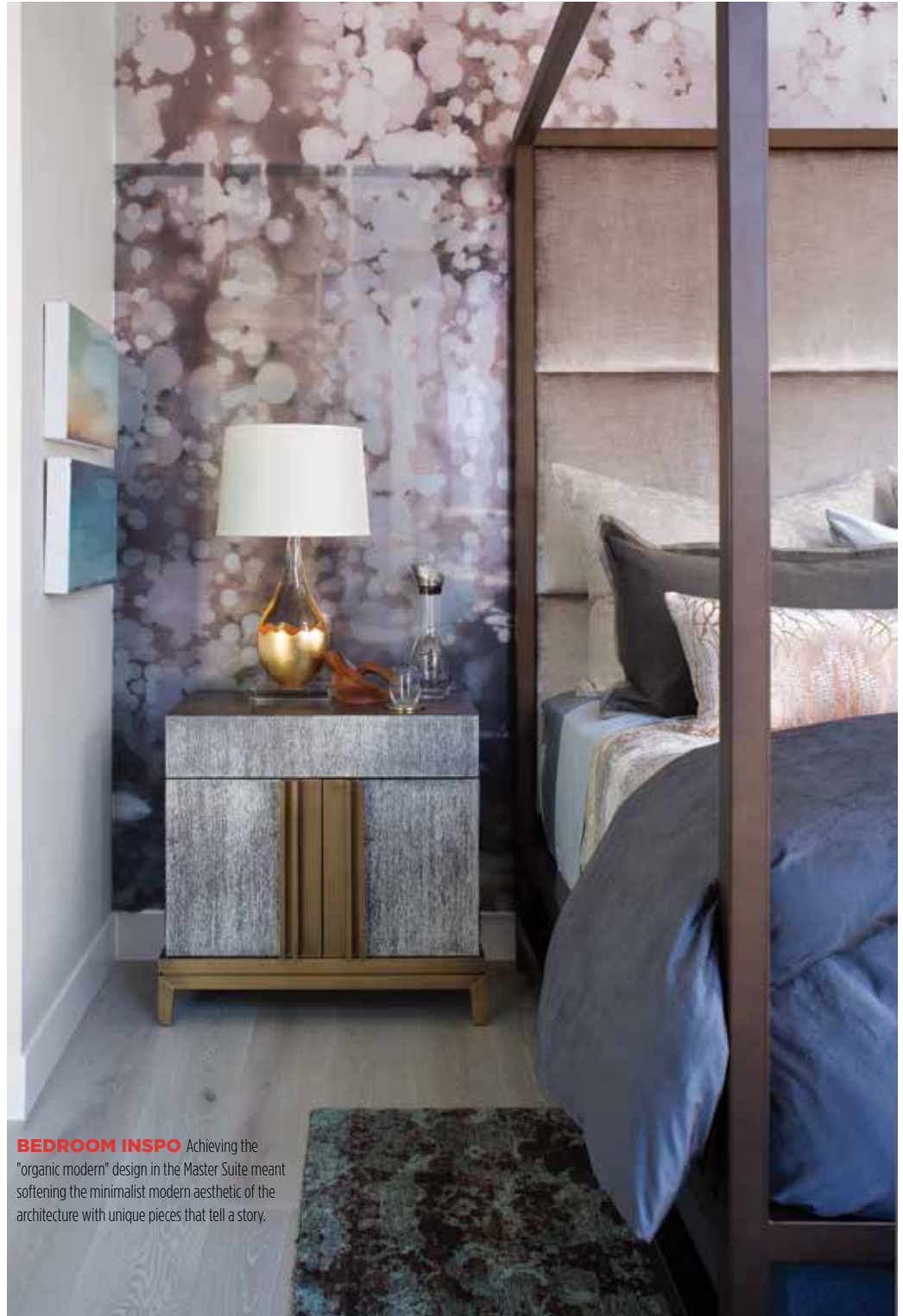
Note: All products, pricing, and details have been provided and are meant for informational purposes only. If you are interested in any of the items listed/pictured in the rooms or spaces, please contact the interior designers directly.

Living Room, Pages 73-75

Infinity round white mirror 36", CB2, \$249; 2-piece sectional sofa (includes black mohair back pillows), \$23,396; coffee table, \$9,135; pyrite sculpture, \$1,566; credenza, \$27,460; set of two boxes, \$200; small marble/gold table lamp, \$1,789; floor lamp, \$8,053; lounge chair, \$11,630; wall art: "Window Dressing" by local Colorado artist, Sarah Van Beckum, \$5,130; pig seat, \$6,790; faceted side table, \$2,565; Shaver-Ramsey Rug, C3518 Tibetan, Nepal 10 x 14, \$10,200; Urban Lights: Living Room, One Light Wall Sconce, Hinkley, Heritage Brass, \$99; All furnishings, lamps, and some accessories were provided courtesy of TOWN Studio; other accessories by Comstock Design.

Dining Room, Pages, 76-77, 84

Nula, 14 Light Chandelier with Gold Leaf Accents, Hinkley, Shell White, \$1,599, Urban Lights; Table, Live Edge Dining Table, Walnut and Steel, \$4,500, Denver Modern; Host/Hostess Dining Chairs, Mason Dining Arm Chair, Black metal, town grey faux leather, \$376.65, Sunpan; Sheepskin Throws, 2' x 3' Scandinavian Sheepskin Throw, Ivory Sheepskin, \$59.43, Etsy; Side Dining Chairs, Windsor Metal Dining Chair, Black, \$139.99, At Home; Artificial Foliage, Rubber Tree, \$160.34, Wayfair; Tree Pot, Distressed Metal Barrel, distressed metal, \$49.99, Cost Plus World Market; Table Sculpture, Black Ribbon Sculpture, \$199, CB2; Planters, Terrazzo Succulent Planters (S/2), White Terrazzo, \$1,105, Beck's Silk Plant Company; Cocktail Books, \$173.63, Barnes and Noble; Double-sided art, 20" x 16" framed art, gold framed print, \$50, Target; Double-sided art, 12" x 12" gold framed art, \$27.99, Target; Wine and Whiskey Decanters, Clear glass, \$176.93, Cost Plus World Market; Bar Set, Gold stainless, \$63, Target; Napkins, Stamped dot print napkins, black and khaki dot, \$1.99, Cost Plus World Market; Clear Glassware, \$97.78, Cost Plus World Market; Diamond Pressed Colored Glassware, Highball and Wine Glasses, Grey and Copper, \$4.99, Cost Plus World Market; Single Tiered Cake Stands, Neutral ceramic, \$23.99, Target; Cutting Boards, various sizes, natural and black woods, \$19.33, Cost Plus World Market; Succulent Planter, Linear Wood Trough with Succulents, Natural Wood, \$14.99, Home Goods; Potted Plants with Vine Bush, Cement and Brass, \$23.99, Cost Plus World Market; Built-in Buffet Cabinet, Inspire Kitchen Design Studio; Counter, LaCour StoneWorks; Zephyr Wine Refrigerator, Mountain High Appliances.



BEDROOM INSPO Achieving the "organic modern" design in the Master Suite meant softening the minimalist modern aesthetic of the architecture with unique pieces that tell a story.

SHOWHOUSE RESOURCES 2020

Main Powder Bath

One Light Bath, Hinkley, Heritage Brass, \$199, Urban Lights; Mirror, 60" x 30" Eternity Mirror, Black Metal frame, \$376.12, Wayfair; Bathroom Tray, Rita Rectangular Black Serving Platter, Black Reactive Stoneware, \$24.95, CB2; Soap Pump, Terrazzo Marble Soap/Lotion Dispenser, Gold and Terrazzo, \$16.99, Cost Plus World Market; Candle, Island Hibiscus Candle, Glass and Wood, \$19.99, Cost Plus World Market; Hand Towel, Blayne Abstract Hand Towel, White and Black, \$9.99, Cost Plus World Market; Plant on Tray and Art Ledge, Potted Mini Fern, \$9.99, Cost Plus World Market; Art Above Toilet, Feather Wall Art, Black, \$149.99, Home Goods; Art Wall, Framed Female Print, Natural Wood Frame, \$19.99, Home Goods; Art Wall, Abstract Print, Dark Wood Frame, \$29.99, Home Goods; Art Wall, Abstract Print, Washed Wood Frame, \$29.99, Home Goods; Art Wall, Women Canvas, Dark Wood Frame, \$16.99, Home Goods; Art Wall, Abstract Print, Dark Wood Frame, \$29.99, Home Goods; Shaver-Ramsey Rug, Garden Carpet, Afghanistan 7'11 x 9'11, \$5,600; Cabinet, Inspire Kitchen Design Studio; Counter, LaCour StoneWorks.

Kitchen and Nook, Pages 78-80

Cabinets, Black/Light Gray/Gray, Inspire Kitchen Design Studio; Countertop, Caesarstone, Alpine Mist, 5110-Alpine Mist; Countertop, Soapstone, LaCour StoneWorks; Backsplash, Bedrosians Tile & Stone, Cloe 2.5 x 8 Wall Tile, Green; Urban Lights; Ten Light Chandelier, Black, \$1,149; Kitchen Nook, Four Light Pendant, Capital Lighting, Patinaed Brass/Dark Zinc, \$440; Cabinet Hardware, Top Knobs, Riverside, Satin Nickel; Cabinet Hardware, Top Knobs, Riverside, Flat Black; Counter Stools, Palacek, Hermosa Outdoor 24" Counter Stool, Grey, \$1,038; Each table, New Collar Goods, Taz Dining Table, 72" L x 36" W x 30" H, Materials: Ash and Steel, \$3,295; Chairs, CR Laine, Duncan Dining Chair, \$1,815 each; Cushions/fabrics, Kravet, Ophidian, \$80/yard; Cushions/fabrics, Kravet, Kelly Wearstler Crescendo, Lagoona/Ebony, \$248/yard; Throw Pillows/fabric, Kravet, Kelly Wearstler Bandeau, Tawny, \$198/yard; Accessories: Island, Global Views, Peanut Bowl, Matte Gray, \$120; Short Stack Bottles, Sea Mist, \$45; Back Wall, Arteriors, Celine Sculpture, Black, \$485; Table Centerpiece, Global Views, Fluted Bowl, Ink, \$298; Appliances, Dacor, Mountain High Appliances.

Office Space, Pages 81-83

Fresno Desk, Sorella, \$3,785; BOLT-INI Bench, Sorella, \$5,423; IKI Chair, Sorella, \$4,237; Bequeve Pillow, MB Home Collection, 12 x 24" lumbar, \$287; SODWANA Pillow, MB Collection, 12 x 24" lumbar, 2 x \$293; Framed French 1950 Print, MB Home Collection, 35 x 35" custom-made frame with Parisian print, 2 x \$1,119; custom-made window treatment, MB Home Collection, \$3,381; All décor accessories (louis + rocco) for sale except books, price upon request; case piece, Noir Furniture,

\$4,659; table lamps, Circa Lighting, \$153; accent table, Phillips Collection, \$576; floor lamp, Circa Lighting, \$669; Shaver-Ramsey Rug, Fresco, India 8 x 10'2, \$13,400; Four Light Pendant, Capital Lighting, Aged Brass, \$554, Urban Lights.

Laundry Room, Page 85

Cabinets, Inspire Kitchen Design Studio; Counters, LaCour StoneWorks; Wall art hanging, Caralarga Art, \$840; linen roman shade, Window's Dressed Up, \$330; black stool, Target, \$60; towel stand, \$17; bath towels, Target, \$13/each; lamp, West Elm, \$184; glass hurricane, large, West Elm, \$63; glass hurricane, small, West Elm, \$35; LED candle, \$14; faux bouquet, Michael's, \$95; hand towels, Together Home, \$56 (set of 4); frames, large, \$20, small, \$16, all Target; black dough bowl (antique), \$85; small black plant pot, CB2, \$8; black woven basket, CB2, \$60; shaped textural pot, \$30; linen boxes, Home Goods, \$10/\$17; white bowl, Home Goods, \$20; succulent stems, \$17/each; black metal basket, The Container Store, \$20; laundry soaps, The Container Store, \$10-\$18; Emma Hayes Wallpaper, sold by Walltawk Denver, \$1,870; Shaver-Ramsey Rugs: Laundry, Shearling, Argentina 4 x 6, \$1,100; Kitchen Kashkuli, Iran 2'8 x 9'9, \$2,200 designer net; Laundry Room: One Light Wall Sconce, Hinkley, Black, \$199, Urban Lights.

Master and Ensuite, Pages 86-89

Master Closet Rug, Kilim, Afghanistan 3'4 x 10'9, \$675, Shaver-Ramsey; Furniture: Bankers BED Home, \$2,850; Teak Carved Temple Mandala, \$860; FBC London Nightstands (pair), \$8,500; Brite White Wool Chair, \$1,200; Holly Hunt Arakan Bench in snake print, \$4,800; Bronze Resin Console, \$2,750; Nave Table small, \$2,800 + freight; Lighting: Beekman Small Lamps (pair), \$1,200; Juliette Lamp (pair), \$2,800; Dot Floor lamp, \$1,350, Urban Lights; Master Bedroom: 16 Light Chandelier, Fredrick Ramond, Burnished Gold, \$1,439; Master Bath, Four Light Chandelier, Hinkley, Burnished Gold, \$799; LED Mirror, Elegant Lighting, Silver, \$378; Master Bathroom Helios Mirror Silver Mirrors/Pictures, 2 x \$242.31; Sunburst Eight Light Chandelier Matte Black & Stairwell, \$643.51 Satin Brass Foyer/Hall Lanterns; Vita Jewel Gemstone Jubilee Ayurveda Carafe, \$195; XL Quartz Singing Bowl, \$1,200; Raw Slumped Glass Podium with Light, \$500; Rhythm Gold Mobile, \$550; Drapery: Coraggio Wool Drapery Panels, \$2,400; Hunter Douglas Blinds; A.R.T (Awaken Raw Talent, Susan Knickle): Steven Hook Zen #14, \$1,800; Miekko Hara "Atom #24, #25, #30", \$1,800 (each); "Nocturnal Animals 1", \$3,000; "Felix 30", \$3,000; Robert Strifolino, "Within and Beyond #17", \$13,500; "Within and Beyond Red and Blue", \$13,500; Bill Snider, BX19/36-45, \$3,800; BX 20/36-45/1, \$3,800; David Ivan Clark "Untitled Still #66", \$1,700; "Untitled Still #27", \$1,700; Accessories: Vita Jewel Gemstone Jubilee Ayurveda Carafe, \$195; XL Quartz Singing Bowl, \$1,200; Raw Slumped Glass

Podium with Light, \$500; Rhythm Gold Mobile, \$550; Robert Kuo Crystal Rock Catfish, \$1950 + freight; Robert Kuo Onyx Disc, \$1,800 + freight; Robert Kuo Toad Sculpture, \$2800 + freight; Robert Kuo Onyx Leaf Bowl, \$1,800; Veneto Soap Pump, Polish Grey, \$120; Aremzamo Soap Dish, Polish Grey, \$90; Veneto Tissue Box, Polish Grey, \$120; Veneto Large Tray, Polish Gre, \$147; Veneto Trash, Polish Grey, \$320; WPA Candle Holder Nickel with Amethyst, 53", \$1275 + freight, 49", \$1225 + freight; Lantana Root (pair), \$1500; Onyx Bowl, \$1400; Bronze Ceramic Pot, \$360; Bedding: Patina Duvet Indigo King, \$1865; Waltz Coverlet Meil King, \$2,800; Bellini Dec Pillow w/ stuffer, Teak XL Euro, \$275; Pair Kroco Celso Shams King, \$545; Giotto King Flat Ice King, \$440; Giotto King Fitted Ice King, \$420; Ombre Dec Pillow Opal, 22x22, \$373; Metallic Willow Dec Pillow Latte, 16x36, \$520; Velvet Throw Mineral, 40x60, \$1488; Woodgrain Ombre Dec Pillow Gunmetal, 18x18, \$373; Towels: Cozi Hand Towel #920 Hand, \$50; Cozi Bath Towel #920 Bath, \$100; Bathroom Accessories: Veneto Soap Pump, Polish Grey, \$120; Aremzamo Soap Dish, Polish Grey, \$90; Veneto Tissue Box, Polish Grey, \$120; Veneto Large Tray, Polish Grey, \$147; Veneto Trash, Polish Grey, \$320; Drapery Panels: Coraggio Wool Drapery Panels, \$2,400; Shaver-Ramsey Rugs: Master Bedroom, 13294 Fruition, India 8'2 x 9'7, \$12,600; Master Bedroom entrance, 15083 Kashkuli, Iran 2'10 x 8'7, \$2,800; Hall between bedrooms, A52891CPW Tibetan, Nepal 2'9 x 12, \$2400; Cabinets, Inspire Kitchen Design Studio; Countertop, LaCour StoneWorks.

Teen Boy's Bedroom, Pages 90-91

Cameroonian shield, \$399; Camber Floor Lamp, black, \$379; Lind 20 diam 16h Round Ottoman in Cowhide Black, \$499; Manhattan Frame 5x7 Centered in Gold, \$99; Manhattan Frame 8x10 Centered in Gold, \$119; Parks Table Lamp, \$399; Trace Picture Ledge in Graphite, \$109; Architecture Full Bed in Natural Steel with Tatum Fabric, Salt upholstery, \$1,599; Kenwood Five-Drawer Dresser with Ceramic Top, Base: Graphite Hardware, Graphite Top: Marbled Black Ceramic, Wood: Walnut, \$2,299; Sheepskin 2'x6' Rug in Steel Grey, \$299, Shaver Ramsey; Paris Chair in Urbino Leather, color saffron, \$2,699; Soho 26w 1.5d 80h Leaning Mirror, color natural steel, \$999; Manhattan Frame 5x7 Off-Center in Gold, \$99; Al-lard 20-22 diam 26h Round End Table in Steel, \$509; Wood & Metal multi-level accent table, Cost Plus World Market, \$189; Urban Outfitters Malin Duvet Cover, \$129; End of Bed Blanket imported from Oaxaca, Mexico, Urban Outfitters Malin Shams in Cream, \$29; ARTE Wallcovering available through the trade at Egg & Dart, Java Pattern from Expedition Collection pricing available upon request. Décor Items: Mask and dish on side table: 1962 treasures from Cote d'Ivoire; Small dish w/ glass marbles on side table from Morocco; Book Ends, Candle & Vase from West Elm: WE Black Candle Glass Collection in Black, \$21; Lava Stone Book-

ends Curved in Grey, \$40; Totem Vase 15 Inches in Black \$40; Pampas Grass Bunches from Crate & Barrel, \$19.95 each; Decorative Box discontinued from West Elm: Curtains from Pottery Barn, Classic Belgian Flax Linen Rod Pocket Blackout Curtain, Ebony, 50 x 108", \$149 each; Drapery Hardware from Maison Lane Iron French Rod in Black, Large, 1 1/4" Diameter Select Length, 102", \$355. Shaver-Ramsey Rugs: pillows: Ikat pillow, Uzbekistan/Turkey, 3 pillows, \$185 each; Tulu, Turkey 5'2 x 7'1, \$2,200; Urban Lights: Eight Light Chandelier, Hinkley, Black, \$999; Archer Six Light Chandelier Satin Black Mid, \$236.88.

Girl's Room, Pages 92-93

All accessories courtesy of Howard Lorton Furniture and Design; Chalk board, Uttermost, \$549; Writing Desk, Wood Bridge, \$1,785; Shoe pictures, Leftbank, \$314 each; Heart picture, John Richards, \$540; Table lamp, Regina Andrews \$450; Accent table, Matiland Smith, \$830; Chair, Hancock and Moore, \$4,605; Throw pillow, Loloi, \$90; Climbing women, Global Views, \$99 each; Vase, Global Views, \$380; Table, Theodore Alexander, \$830; Hore sculpture, Cyan, \$290; Floor mirror, Cyan, \$820; Agate boxes, Cyan, \$159, \$179; Floor lamp, Arteriors, \$1,550; Bedding, Eastern Accents, \$2,553; Art, Iconic Pinapple, \$540; Florals, Fosters, \$22, \$12, \$12; Book quotes, E. Lawrence, \$169; Agate pictures, Paragon Pictures, \$149 each; Other contributing manufactures: Precision Drapery installations, Paramount Fabrics, Cornerstone Designs, RM Coco, Pindler. Urban Lights: Girl's Bath, One Light Wall Sconce, Capital Lighting, Antique Silver, \$130; Girl's Bedroom, Eight Light Semi-Flush, Capital Lighting, Polished Nickel, \$198; Tile, Bedrosians Tile & Stone; Cabinet, Inspire Kitchen Design Studio; Countertop, LaCour StoneWorks.

Boy's Room/Main Bathroom, Pages 94-95

Boy's Bedroom: Liara Hide Chair, Dovetail Furniture, \$1,200; Twin over Twin Bunkbed, Dania, \$500; Macrame Pillow, Surya, \$75; Bed Comforters & Shams, Ugg Bedding, \$300; Stanton Accent Table with Leather Sling, Alder & Tweed, \$445; Custom Embroidered Pillow Shams, Walker Valentine, \$240 each; Adjustable Denim Beanbag Chair, Crate & Barrel, \$149; BB Totes Adore Utility Baskets, set of 2, Napa Home, \$200; Bed Throw Pillows, Custom Made, \$500; Beige Haywood Wallpaper, Thibaut, \$108/single roll; Black Metal Six Light Chandelier, Fredrick Ramond, \$719; Marble Tic Tac Toe, Go Home, \$92; Gage Throw, Surya, \$250; Custom Snowboard Painting, Sarah Spencer for Design Studio Interior Solutions, \$1,500; Anchors Aweigh Wall Paint, Sherwin Williams; Hall/Main Bathroom: Grey, Black & White Cloe Tile, Bedrosians Tile & Stone, \$6.99/sq. ft; Metal Sculpture, Arteriors, \$495; LED Mirrors, George Kovacs, \$199.95; Custom Embroidered Hand Towels, Walk Valentine, \$85 each; Urban Lights: Boy's Bedroom, Eight Light Semi-Flush, Capital Lighting, Aged

SHOWHOUSE RESOURCES 2020

Brass/Black, \$398; Hall Bath, LED Mirror, Elegant Lighting, Glossy White, \$333; One Light Pendant, Capital Lighting, Aged Brass, \$160; Edison Collection Antique Brass, \$221; Brass Floor Lamp Edison Collection, \$125; Nova LED Mirror White 24"W x 40"H, 2 x \$239.76; Tile, Bedrosians Tile & Stone; Dual Vanity Cabinet, Inspire Kitchen Design Studio; Countertop, LaCour StoneWorks.

Recreation Room and Bar, Pages 96-97

Furniture and Accessories courtesy of The Showhouse @ Furniture Row: cloudy pond picture, \$469; flowers flame candle, \$299; box geode black, \$349; Larissa vase, large, \$229; Larissa vase, small, \$169; thistle on white marble, \$249; Abernathy cheese board, \$59; curly willow vase, \$309; stamped leaf sculpture, \$159; teak ball sculpture, \$79; Amida vase, \$99; Thurman decanter, \$89; bougie jigger with leather, \$39; ice bucket, \$89; wreath nature vine, \$308; Cultiver art, \$269; Urban Lights: Rec Room, Three Light Island Pendant, Capital Lighting, Aged Brass, \$598; floor lamp, \$2,099; Basement Bar, One Light Wall Sconce, Capital Lighting, Aged Brass, \$150; teak vase, \$49; ribbed decanter, \$139; fiddle leaf fig, \$729; Licpa ice bucket, \$209; black balloon molds, \$169; Theory sectional with box tables, \$5,783.40; cocktail ottoman, \$675.60; bar chairs, Dovetail, \$290.63; leather chair, Huntington House, \$2,449; Alpaca side chair, \$4,499; round ottomans leather, \$949; sideboard, \$1,953; Shaver-Ramsey Rug, C3908 Tibetan, Nepal 12 x 15, \$18,700; Built-in Cabinetry, Inspire Kitchen Design Studio; Counter, LaCour StoneWorks.

Guest Room/Bathroom Downstairs, Page 98

Guest Bathroom: Art, Maria Wall Art, \$278, 22.5" square, Anthropologie; Inspire Kitchen Design Studio; Countertop, Santa Maria Soapstone, Eased edge, 4" backsplash on sides and back, LaCour StoneWorks; Hardware, Brass Edge Pull, 1.5" Satin Gold Finish, Erntek; Plumbing, Various, Brushed Brass, Ferguson; Plumbing, Pfister "Tenet" Slidebar Mount Hand Shower, Brushed Brass, Ferguson; Floor Tile, Allora Solid White, 3" x 24" x 1/4", Brick Offset Pattern, Shower Wall Tile, Cloe White, 2.5" x 8", Stacked Bond Pattern, vertical with horizontal 2.5" x 8" band, Floor & Wall Mosaic tile in White Matte, Bedrosians Tile & Stone; Urban Lights: Basement Guest Bath, Two Light Wall Sconce, Capital Lighting, Aged Brass, \$142; Basement Bedroom, One Light Foyer Pendant, Hinkley, Black, \$199; Frameless Glass Mirror, \$119, 36" Frameless Round, Wayfair; TP Holder, Single post toilet paper holder, Brushed Brass, 2" x 6.88", Build.com; Robe hooks shower, wall-mounted single robe hook, Brushed Brass, 2.25" x 2", Build.com. Guest Bathroom: Mattress, Queen Mattress with Standard Boxspring and rails, Denver Mattress; Bed, Chantilly Queen Bed, \$8,400, Onyx Paint Finish, Old Biscayne Designs; Bedding, Dotted Palm Bedding, \$251,

Queen Duvet, 2 Standard pillowcases, Rebecca Atwood; Bedding, Geo Wave Coverlette, \$172, Sand, Rebecca Atwood; Nightstands, Stella Nightstand, \$1,785 each, Woodbridge Furniture; Dresser, Leda Chest, \$4,785, Woodbridge Furniture; Stools, Brie Bench, \$2,550 each, Pure Black metal finish, Old Biscayne Designs; Stool Fabric, Antelopes, \$560, 177570 Jade, Schumacher; Accent Pillow Fabric, Odisha Ikat, \$335, Green, Schumacher; Accent Pillow Trim, Ground Cut Fringe, \$170, Black, Schumacher; Accent Pillows, Pommia Pillow/Kohl Reverse, \$384, 22" square, Susan Connor; Accent Pillow Labor, Lumbar Accent Pillow Labor, \$75, 45" x 14" Margrette Castro with Wildflower Upholstery; Window Treatments, Tapiz/Kohl Reverse, \$924, 5' x 5', Susan Connor; Window Treatments Labor, \$700, 5' x 5', Shirley Smiley with Shades & Such; Dual Vanity Cabinet, Inspire Kitchen Design Studio.

In-Home Gym, Page 99

Mirror, \$250; hooks, \$25, jump ropes, 2 x \$16; bands, \$11; stairs, 2 x \$29.99; mat, \$49; yoga mat, 3 x \$40; ball, \$25; wicker basket, \$45; towels, \$55; wire basket, \$10; shaker bottle, \$10; 15 lb. kettle weight, \$25; Urban Lights, 52" Ceiling Fan, Hinkley, Matte Black, \$459; Denver Home Fitness provided all of the in-home equipment.

Bedroom, Page 100

Baskets, OrganiHaus XXL Extra Large Cotton Rope Basket with Leather Handles, 20" x 13.3" Coiled Rope Basket, off-white and black, \$38 each, Amazon; Wall Hooks, set of five round, solid wood wall hooks, \$90.87, Etsy; Bench Cushion, Malibu Leather Bench Cushion, Caramel, \$299, Pottery Barn; Pillow, Dacia 20" x 20" down-filled pillow, hand-woven knife edge, cream, burnt orange, camel, \$115 each, Six Walls; Pillow, Katniss 14" x 22" down-filled pillow, hand-woven/fringe, black, cream, and beige, \$83 each, Six Walls; Pillow, 20" x 20" Gal down-filled pillow, cotton and leather fringe accent, \$420 each, Six Walls; Pillow, 20" x 20" Nest down-filled pillow, cotton and leather blocking, \$480 each, Six Walls; Art, Alps Orange by Joe Mania, 30" x 2" x 40", fixed French cleat hardware, \$755, Six Walls; Accessories, Designer's personal inventory (not for sale), Six Walls; Table Lamp, Hannity table lamp, 24" x 7" x 7", Brushed Brass metal body, natural finish marble base, \$200, Six Walls; Plant and Planter, White ceramic planter with live plant, \$50, Six Walls; Baskets-box type, set of three trimmed storage boxes, grey and white, \$60, Six Walls; Designer Dog Leash, leather, antique brass, single crystal, 4' x 1", \$35, Hound and Soul; Baskets-metal type, Slim Tosca Basket with Wooden Handles, black/natural, 5-3/8" x 14" x 6-1/8", \$20, Yamazaki; Hangers, set of three, wood, \$6; Photo Frame, Natural Agate Slice Frame, \$34.99; Wood Bowl, Natural Wood Bark Bowl, \$19.99; Hanging Wall Planter, Natural and White Dipped Hanging Planter, \$17.99; Small Wall Planter, Natural and White Dipped Planter, \$14.99; Medium Wall Planter, Natural and White Dipped

Planter, \$14.99; Books, Designer's personal inventory, not for sale; Medium Two-Tier Standing Planter, black-finished iron framing, pots in antique gold, 14.5" x 14.5" x 51", \$350, Six Walls; Large Three-Tier Standing Planter, charcoal finish, pots in antique gold, \$470, Six Walls; Wall Art, 21" Metal Wall Sculpture, \$225, Six Walls; Bench, Metal and Bordeaux Oatmeal, 72.5" x 19" x 19.75", \$640, Six Walls; Wall Art, 60"-wide abstract wall art from Six Walls inventory; \$525, Six Walls; Table Top Planter, large black bowl with mini faux succulents, \$435, Six Walls; Urban Lights: Four Light Pendant, Capital Lighting, Matte Black, \$418; Built-in Wall Cabinets, Inspire Kitchen Design Studio; Counter, LaCour StoneWorks; Tile, Bedrosians Tile & Stone.

Outdoor Space/Patio, Page 101

Front Porch: Les Jardin, Spencer Bench, \$670; Mulia, 18" Rd Side Table, \$220; Ow Lee, 19 x 15 Boxed Pillow, \$195 each; Fire Pit/Lounge: Homecrest, 32" x 52" Mode Coffee Table Height Fire Pit, Carbon, \$2,499; Homecrest, Infiniti Armless Chat Chair, Carbon, Cam-

eo, \$729 each; Homecrest, Infiniti Side Table, Carbon, \$459; Homecrest, Infiniti Corner Table, Carbon, \$459 each; Jensen Leisure, Weathered Ruby Rocker, \$699 each; CCC, 30" Round Pool Stool, Canvas, Navy, \$459; CCC, 20" Sq. Pool Stool, Layer Caribbean, \$259; CCC, Bolster Pillow, Array Caribbean, \$100; CCC, Rect Throw Pillow, Level Breeze, \$65; CCC, 20" SQ Throw Pillow, Array Caribbean, \$110 each; CCC, 18" SQ Throw Pillow, Canvas Melon, \$65; CCC, 15" SQ Throw Pillow, Scale Prep, \$50 each; CCC, 18" Throw Pillow, Spectrum Aztec, \$45 each; CCC, 15" Throw Pillow, Madori Bermuda, \$70 each; Les Jardin, Small Traditional Lantern, Grey, \$369; Les Jardin, Large Skaal Lantern, Teak, \$449; Dining: Homecrest, 3-piece 36" Sq Allure Balcony Set, Carbon, Cameo, \$1,999; Urban Lights: Large Exteriors, One Light Outdoor Wall Mount, Hinkley, Black, 2 x \$195; Small Exteriors, One Light Outdoor Wall Mount, Hinkley, Black, \$178. *Front Door, One Light Outdoor Hanging Lantern, Hinkley, Black, \$195; Front Door, Pendant Republic One Light Outdoor Hanging Lantern, Black Exterior, \$164.88.

SHOWHOUSE VENDORS 2020

Appliances: Mountain High Appliance, 303.951.0505

Arborist: Colorado Tree & Lawn Specialists, 303.727.9009

Architect: Alvarez Morris, 720.932.6633

Brick Work: Dh Construction, 720.333.9674

Cabinets Designer: Inspire Kitchen Design Studio, 720.650.0500

Carpentry: JD Brown Builders, 303.842.0559

Cleaning: Impact Cleaning, 720.708.7036

Countertops: LaCour StoneWorks, 720.570.0467

Custom Window Blinds: Hunter Douglas, 206.275.3399

Demo: Mendoza Demolition Services, 303.427.1201

Drywall: Four Star Drywall, 303.238.5594

Electricians: Vertical Electric, 303.598.3491

Engineer: Barton Consulting, 303.748.3804

Fence: No Hassle Fence, 303.368.9472

Fitness Studio: Denver Home Fitness, 720.550.6360

Fireplaces: Rio Grande Co., 303.825.2211

Flatwork: M2 Concrete & Excavation, 970.379.6648

Framing: Bigge Construction, 303.933.4451

Garage Doors: American Garage Door, 303.321.6065

Hardware: Rio Grande Co., 303.825.2211

Hardwood Floors: Arrigoni Woods, 970.479.1800

Home Technology: Harrison Home Systems Inc., 303.526.0403

HVAC: Smith and Willis, 303.688.4487

Insulation: Basic Insulation, 208.830.8146

Interior and Exterior Painting: Colorado Quality Paint, 720.297.9617

Landscaping: Skyview Landscaping, 303.994.0579

Lighting: Urban Lights, 720.237.7873

Low Volt: Harrison Home Systems Inc., 303.526.0403

Lumber: Alpine Lumber, 303.458.8733

Mattresses: Denver Mattress Co., 303.566.8619

Metal Welding: Vision Home Improvements, 303.369.6819

Metal Work: Luxury Metal (FP mantel, exterior railing and window screen), 720.271.7042

Plumbing: Plumb On, 303.564.7240

Plumbing Fixtures: Ferguson Enterprises, 303.739.8000

Pool Table: Fodor Billiards, 303.920.0800

Roofing, Gutters, and Metal Siding: B&L Roofing, 303.985.8536

Rugs: Shaver-Ramsey Rugs, 303.320.6363

Shower Glass: Beltline Shower Door & Mirror, 720.609.3082

Stairs and Raining: Masterpiece Stairs, 303.922.5700

Tile Work and Carpet: Kitchen and Floor Concepts, 303.594.1706

Tile/Stone: Bedrosian, 303.722.2200

Wallpaper Installer: Cool Beans Design, 720.219.2507

Waterproofing: Suededo Drains & Waterproofing, 303.427.8870

Windows: Mountain States/Anderson Windows, 303.377.8566