

AN EXPANSIVE BATH

For this historic home, a designer turned a bedroom into a spacious respite.

PHOTOGRAPHY BY LIBBIE MARTIN

The owners of one of the oldest homes in Westminster were committed to honoring the history encapsulated within its walls, but they needed an update to make it work for them today. The remodel—by Tennille Wood, CEO and principal designer of Beautiful Habitat Interior Design & Decoration—encompassed the whole house as well as an addition, but a particular focus was the second floor bath.

This home was built in the 1890s, a time when bathrooms were hardly a place associated with luxury and space. The clients needed a master

Color Matched

The vanity cabinets in this roomy bath are painted in Beach Glass from Benjamin Moore. For the mirror frames, Sherwin-Williams created a custom red matched to the flowers in the valance.

suite, and they wanted a large bathroom and a soaking tub to take advantage of the gorgeous mountain views. The master was planned for the attic, and it includes a bathroom as well, but a key aspect of this plan was that moving the main bedroom up one floor gave Wood the freedom to reconfigure the second floor, taking an entire bedroom and the exist-

ing bath for this luxurious space.

The bathroom was small, comprising a single vanity, toilet, and a tub/shower combination that served all four bedrooms on the second floor, and it was quite dated—the home had last been remodeled in the 1960s. Another important consideration for the homeowners was to keep the existing window size, location, and moldings. Although the windows were updated, Wood and her team kept the original sills and moldings intact.

The footprint of the old bathroom is now just the shower and

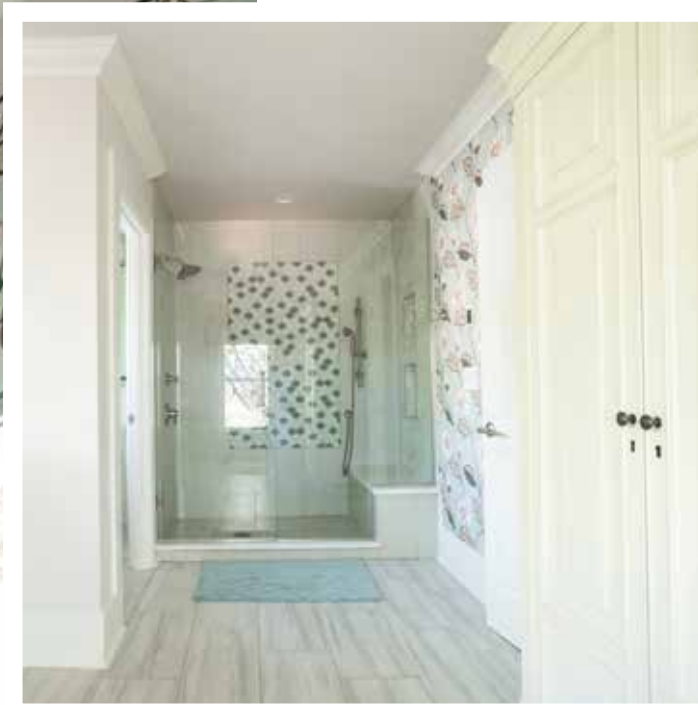
water closet of the newly expanded room. The previous bedroom space now features a long double vanity, large soaking tub, and an armoire for storage.

The home was built in the prairie style commonly seen in the 1890s. “Our design honored that history with an updated traditional design style,” says Wood. “I incorporated traditional elements, like shaker cabinets, but in an updated and fun way with color.”

The client also asked for interesting and unique design elements, which can be seen in the large-scale







Floral Accents

(Far left) The wallcovering and matching window valances are in a pattern by Nina Campbell for Osborne & Little. The Oak Hill freestanding soaking tub is from DXV. (Left) The shower and WC show the size of the entire previous bathroom that served four bedrooms on this floor.

BEAUTIFUL HABITAT
INTERIOR DESIGN &
DECORATION
303.323.4683
beautifulhabitat.com

floral wallpaper, which was the inspiration for the overall color scheme. “I knew that the client really likes the sea glass, blue-green color, and when I found this wallpaper, I knew it was perfect for the bathroom,” says Wood. “We repeated the pattern on the fabric for the window valances. We had the custom cabinets painted to pull out the colors of the wallpaper and fabric. And we chose the accent tiles in the shower to repeat the color in a sea glass mosaic. We also pulled out the little hint of red in the flowers by custom-matching the mirrors to that tone of red.”

In addition, she says, “The bathtub perfectly fits our traditional

style, and the slipper design is so comfortable for soaking. It’s perfect for taking advantage of the mountain views.” The makeup vanity was designed around the window placement and its original wood moldings. The bathroom was large enough that they added the armoire for storage in place of a built in linen cabinet. “The faucets and light fixtures were all chosen for the traditional design and a slight farmhouse feel,” she says. “I kept the floor and shower tile simple and bright so as not to compete with the wallpaper or vanity.”

When asked about the highlight of the project, Wood says, “I love that wallpaper! I love that it is the element that ties the whole room together and the backdrop it creates for the elegant slipper bathtub. When I first showed that wallpaper to the client, she immediately agreed that it was absolutely perfect for the room. From that point on, it was always our favorite element.” ✦