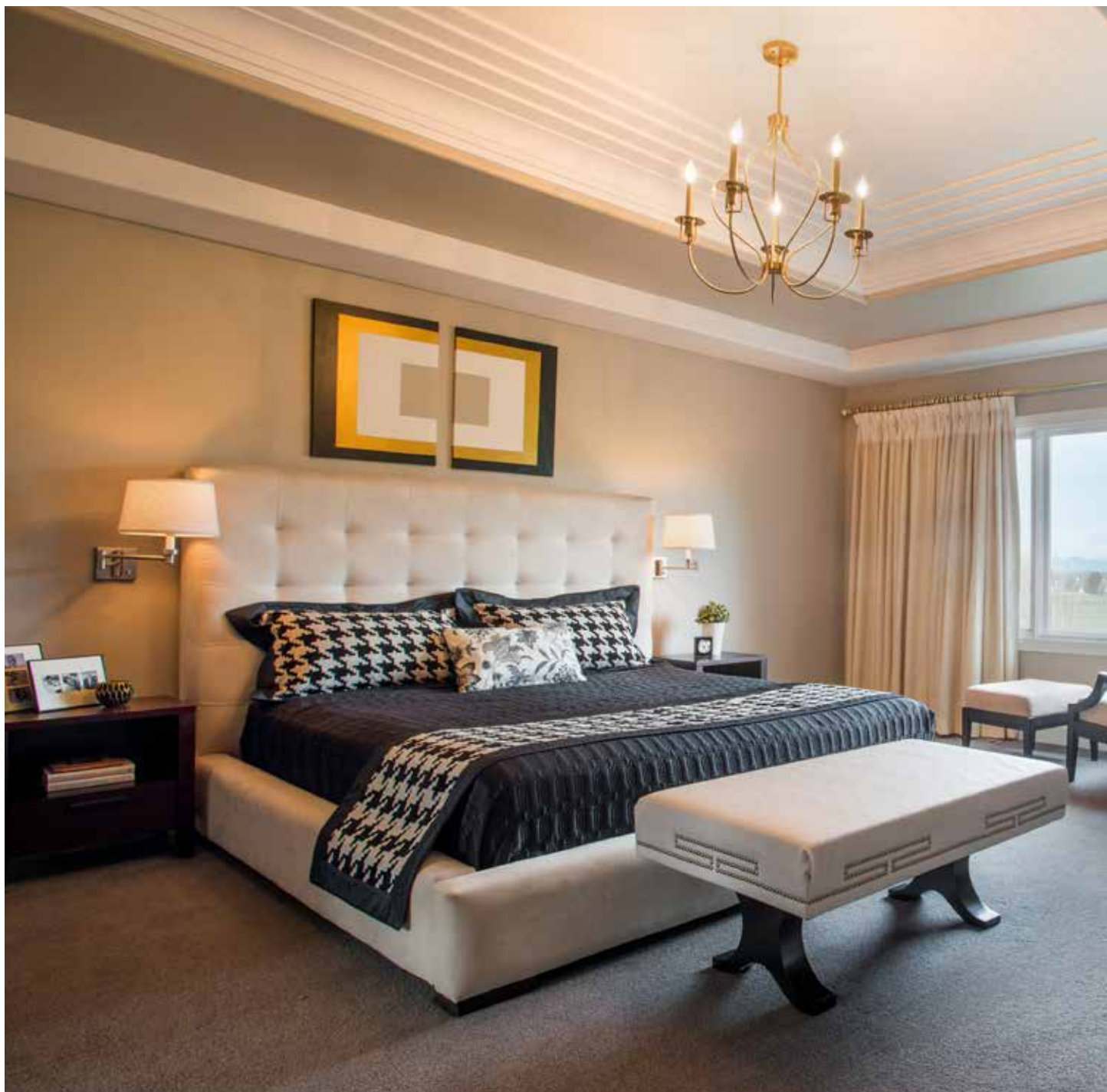


DENVER LUXURY

Interior Design



Ideas and inspiration from Denver
and other Front Range homes



ABOUT BEAUTIFUL HABITAT

TENNILLE WOOD
PRINCIPAL DESIGNER, OWNER

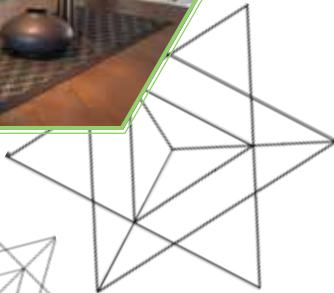


Studying interior design in London gave Tennille Wood an understanding of the broad history and rich influences of design. Being in London gave Tennille insights into design that were deeper and richer than the four walls of school; it's where she saw history and contemporary life intertwined through dynamic design. And there, so far from her Denver roots, she saw clearly how her design sensibility had been shaped. Today, Tennille's designs are inspired by a unique combination of classic European design elements juxtaposed with the casual, airy feel from her western roots and her own bold sense of adventure.

And so it's not surprising that juxtapositions show up in Tennille's work. You'll find them when she fuses different styles and color to create more interest; they're there again when she's mixing contemporary art with antique furniture, and when she blends bold colors with unexpected patterns.

With her interior design practice, Beautiful Habitat Design & Decoration, centered back in her Denver hometown, Tennille and her team have worked on everything from new construction to renovations and remodels; they've rethought 1890s farmhouses and 1920s bungalows to make them 21st-century friendly. They've designed urban duplexes for Denver's city dwellers and suburban homes for growing families as well as the city's equally growing active adult population. (And many, many other residential spaces in between.) For more than ten years, Tennille has been proud to serve more than 60 clients throughout the Front Range, transforming houses into beautiful habitats.

Tennille is strategically located between Denver, Boulder and the Foothills, which helps satisfy her itch for the outdoors and adventures. When she's not creating beautiful habitats for her clients, you can usually find her exploring the world, be it surfing on a beach in Bali, exploring museums of Europe, running crazy relays through the Rocky Mountains or climbing Mt. Kilimanjaro. When she stays closer to home, Tennille and her husband enjoy the trails of Colorado and do watersports wherever they can — and where they go, their dogs, Zander and Pedro, go, too.





"LUXURY IS IN
EACH DETAIL."

-Hubert de Givenchy

Living in luxury doesn't mean stuffy design or a home full of spaces you won't let your children enter. Luxury is defined as "a state of great living." At Beautiful Habitat Design & Decoration, we believe luxury is defined by each individual client. And to help you develop your own definition of luxury, we've created this collection of ideas and images from Denver and other Front Range projects. Each has its own unique style and definition of luxury.

It's luxury interior design inspiration for the whole home.



SUBTLE PALETTE

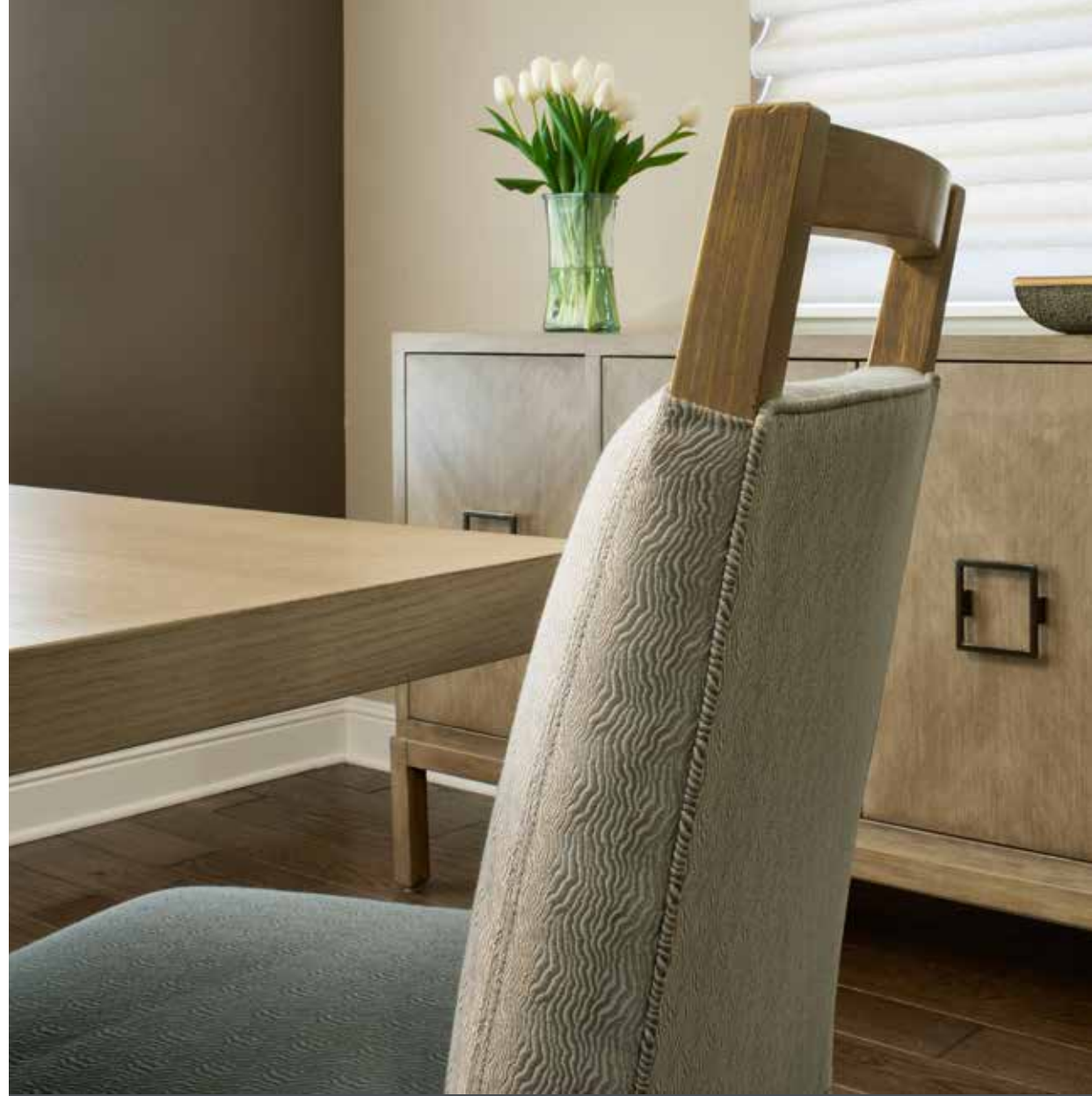
This contrast of dark and light creates the perfect traditional, elegant kitchen, while the updated styling, finishes and bar stools ensure a contemporary twist. The granite countertops have coloring and texture similar to that of marble with a more durable, long-lasting finish.

Shades of brown married to gray undertones produce a sleek, modern dining room with a polished vibe. A translucent glass lighting fixture with clean edges plays off the rectangular shape of the table. Metallic accents round out the look in this dining room.

The box pleat valances in this dining room add to the subtle sophistication of the space and mirror the neutral color palette of the wood and upholstery on the chairs. Light-filtering blinds create a calming effect.

A beautiful blend of classic design married to muted textures, tones and hues showcased their distinctive sculptures, wall-art and clay, pottery and glass pieces.

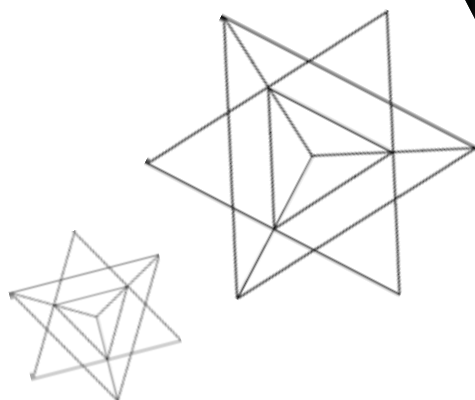
A custom fireplace surround (or in this case the entire wall) creates an entirely different feel for a room. In this particular situation, the area encompassing the fireplace is covered in elegant natural stone. Beige tones with varying degrees of cream striping weave in earthy elements and grains while embellishing what would be an otherwise ordinary plain wall. Natural stone is the perfect home décor addition; it's minimal upkeep and striking features will continue to wow for years to come. This fireplace surround even has a special place to show off colorful vases and glassware, adding an artistic element to the room without overpowering in a unique nook. Sometimes subtly says it all.







"CUSTOM WINDOW COVERINGS
ARE A LUXURY DETAIL THAT
MAKE THE SPACE."



REFINED DESIGN

A well-designed dining room serves up plenty to talk about. Rich gold tones with layered crown molding in different colors accentuate the height of the room. The bold wall color and custom drapes envelop the room in jewel-toned luxury. Gold carries throughout the room in framed wallpaper panels and décor. Vintage chairs were refinished and re-upholstered to accompany a custom dining table and family heirloom chest.









This luxury living room features traditional furniture including vintage Louis XIV-style French arm chairs. The modern artwork creates a surprising juxtaposition against its ornate frame and the room's furnishings.

Homeowners often overlook the master bathroom as a place to showcase artwork since they are frequently the only people to use it. However, with beauty and luxury going hand in hand, the right work of art on the wall will set the tone and personality for the space.

This beautifully detailed bedding is fashioned from rich satins with a curated selection of textures and patterns put together just for this room. It's what makes the bed so inviting. The black satin coverlet evokes a sense of luxury and class, while the houndstooth pillows add a touch of masculinity. The floral pillow, with its soft, elegant lines, creates contrast to the crisp angles.





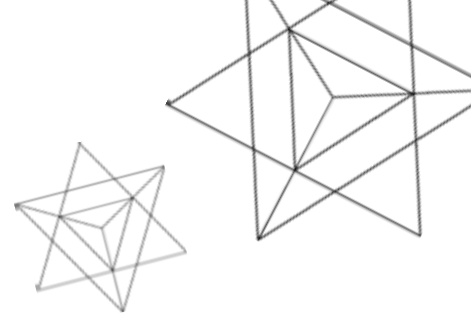
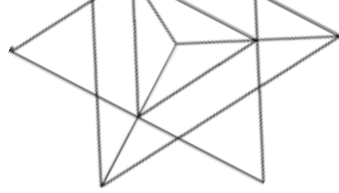
MAKING OLD NEW AGAIN

Don't let the relaxed vibe of this 1920s brick bungalow fool you. Luxury touches such as chic gray trim and rich fabrics make this whole home remodel and pop-top a project to remember.

A shortcut to a warm and inviting living room is to use layers of texture and color, with abundant seating, all demonstrated here with a shag-style rug, large sofa, blue side chairs and patterned pillows. The rich colors and textures create a luxurious space to relax and unwind.

The décor was inspired by the client's painting of Aspen trees so chairs, pillows and glass vases were selected to highlight colors in the artwork.

Filled with luxury fabrics with satin sheen, the master bedroom is a hybrid of elegance and indulgence. Fabric is used in more places than you'd think — in the sea blue satin headboard, sand-colored table lamp and even in the drum light fixture. When you find the perfect fabric, it's hard to go wrong, and it adds so much more style to the space.



CRISP AND CLEAN

This fresh Wash Park interior design includes custom furnishings and a twist on classic elements. The result? A new version of luxury that's nothing short of marvelous.

While the furnishings carry traditional shapes and lines, the designs were “refreshed” through the use of plush fabrics and eye-catching patterns. The design is considered “New Traditional” meaning you preserve the important design elements of the past but add the comforts of modern life.

The houndstooth pattern in a crisp coral creates a twist on a well-loved classic design. The pops of rich color bode well in this otherwise neutral, earthy room.

Three custom designed hexagon tables, crafted by a local furniture maker, can be arranged for everything from game night to cocktail parties. The entire wall storage unit is also a bespoke piece, carefully designed to hide the fact that the window is off-center in the room.

For this home, it was all about contrasting and complementing stains, materials and fabrics. Tennille says, “My favorite part about furnishing and decor is the mix of fabrics, patterns, textures and colors. It’s like my version of a painter’s palette.”

The dining room features a repetition of blue hues — seen in a dark blue on the dining chairs and the light blue of the table in drapery fabric. In fact, blue variants and the coral color scheme are woven throughout the entire home to create a cohesive flow when moving from room to room.



“NEW TRADITIONAL”
DESIGN COMBINES
CLASSIC DESIGN
ELEMENTS WITH
MODERN-DAY
LUXURY.”





FOLLOW US.



CHAT WITH US.
(303) 323-4683

WORK WITH US.

